

DPNCheck®

IT Guide: Reporter Settings



Application Version 2.3

Overview

This document describes the settings for the DPNCheck® Reporter Application.

Prior to installation, it is important to coordinate how the settings will be configured for your organization.

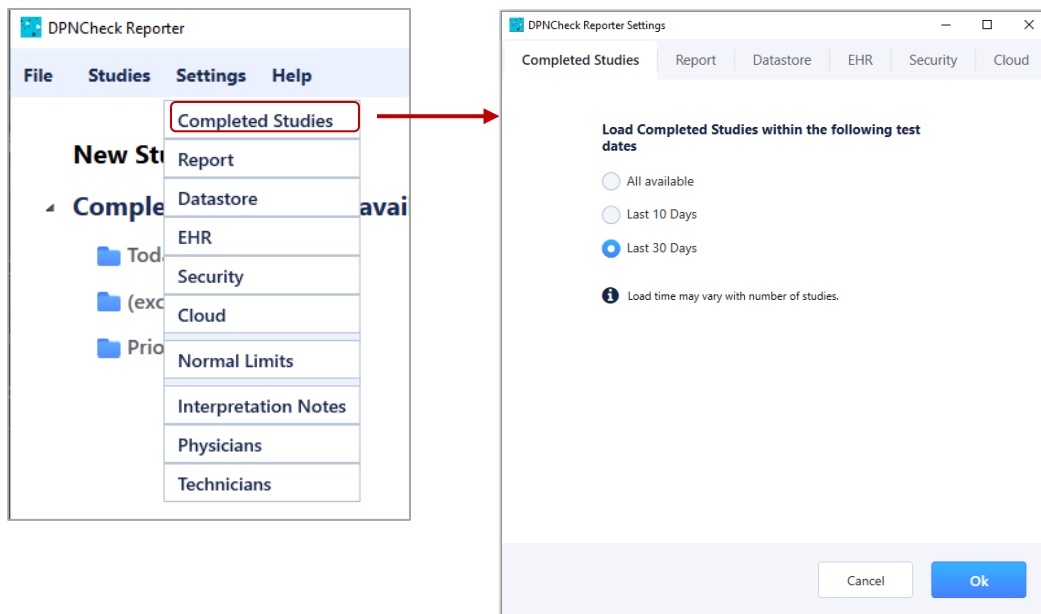
Alignment is necessary to ensure consistent use of DPNCheck Reporter by end-users, as some settings affect display of test results and some may be impacted by your security policies. A detailed description of each setting's function within Reporter may be found in the DPNCheck Reporter Application User Manual, www.dpncheck.com/resources.

Applicable Versions

This document is applicable to the DPNCheck Reporter application version 2.3.

Settings Summary

The tables below summarize the DPNCheck Reporter application settings. These settings are modified through the Reporter application. The list below also outlines which settings are locked if the “lock settings” feature is used with remotely installed endpoints.



Completed Studies Settings Tab		
Setting	Description/Options	Can Lock?
Completed Studies	Controls the time period of Completed Studies loaded/shown in the Studies list and study search. (This setting only affects the display of date ranges. All studies will still be retrievable, even if not visible in the list). Options: All Available , Last 10 Days, Last 30 Days (Default)	NO

Report Settings Tab		
Setting	Description/Options	Can Lock?
Measurement (US or Metric)	Allows user to select units for height entry (height field entry dependent on Normal Limits setting) Options: US (Default if Operating System Language is US English), Metric	YES
Show	Controls what is shown related to interpretation based on Normal Limits. Options: Severity Scale, Interpretation Guide (Default), Neither	YES
Date Format	Allows user to select the desired format for date shown in Study List, Report tab, Waveforms Tab, and Report. Options: General Windows options for date format, default = M/DD/YYYY	NO
Time Format	Allows user to select the desired format for time shown in Study List, Report tab, Waveforms Tab, and Report. Options: General Windows options for time format, default = H:MM AM/PM	NO
Document Header	Displays the Physician Profile that will be automatically populated in the Report tab for new studies, when a Default Physician Profile has been selected in Physician Settings. No settings control on this tab.	NO
Enable Practice Entry	Determines whether certain fields for Practice Information associated with the Physician are shown on the Report Tab for entry and Report. Applies to the following Practice fields: Practice Name and Address fields. Options: Enabled (Default), Disabled	YES
Include Technician Name in PDF Report	Determines whether the Technician Name entered on the Report tab will be included in the header of the PDF Report. Options: Enabled, Disabled (Default)	YES
Interpretation Note Library	Provides access to the Interpretation Notes Library from this tab. No settings control on this tab.	NO

Datastore Settings Tab		
Setting	Description/Options	Can Lock?
Private Folder	Sets the path for storing study (AES 256 encrypted .nmx), report (PDF), and export (base 64 encoded HL7) files, as well as physicians and technicians lists, normal limits setting, and interpretation notes. May be a UNC path. Default: C:\DPNCheck	YES
Share Folder	Optional. Sets the path for sharing Report (PDF) and Export (base 64 encoded HL7) files if Export Destination setting set to Export to File. May be a UNC path. Default: No path specified by default.	YES
Share Reports	Controls sharing of Report (PDF) files. If enabled, Report files are saved to the Share Folder specified; if disabled, they are saved to the Private Folder. Setting is active if Export Destination setting set to Export to File. Options: Yes, No (Default)	YES
Share Exports	Controls sharing of Export (base 64 encoded HL7) files. If enabled, Export files are saved to the Share Folder specified; if disabled, they are saved to the Private Folder. Setting is active if Export Destination setting set to Export to File. Options: Yes, No (Default)	YES

Advanced		
Setting	Description/Options	Can Lock?
Temperature Compensation	Controls use of temperature compensation to the Conduction Velocity results in a study. Unless the DPNCheck device is being used in a specific situation where temperature compensation is not desired, this should remain set to Yes. Options: Yes (Default), No	YES

EHR Settings Tab		
Setting	Description/Options	Can Lock?
Export Destination	Controls the destination for sending the HL7 Export. “Export to HL7 File” will save base64 encoded HL7 exports to the specified Datastore folder. “Export to EHR” will send the base64 encoded HL7 to an HL7 MLLP receiver via TCP/IP to a specified IP Address and Port Number. Options: Export to File (Default), Export to EHR	YES
Automatic Export	When enabled, upon selecting the Complete button to Complete a study, an Export will also be performed simultaneously, sent to the destination specified in the Export Destination setting. Options: Yes, No (Default)	YES

Security Settings Tab		
Setting	Description/Options	Can Lock?
User login security	When enabled, user must enter Windows credentials to login to the Reporter application. See notes in the Settings Locations section below related to setting this to “On” during the remote install process. Options: Off (Default), On	YES
Lock local user	Controls locking of the group of settings that may be locked if the application is installed Remotely. See Settings Lock section below for notes on setting this to “On” during the remote install process. Options: Off (Default), On	YES

Cloud Settings Tab		
Setting	Description/Options	Can Lock?
Upload to Cloud	Controls the use of the Cloud upload feature to upload de-identified Reporter study data to the DPNCheck cloud upon study Complete action. Requires an active Internet connection. Setting will not be saved if a Customer ID is not entered. Options: Off (Default), On	YES
Customer ID	ID is assigned by NeuroMetrix and associates the de-identified data with your organization.	YES
Site Name	This is an optional setting that may be used for designating a facility or clinic name for data reporting purposes.	YES

Technicians		
Setting	Description/Options	Can Lock?
Technicians	Optional. Creates a set of Technicians that may be selected on the Report tab, containing the following fields: Technician Name (required), Technician Email (optional). If a default is selected, this Technician will be auto-populated in the Report tab for each new study.	NO

Parent Group Name	This is an optional setting that may be used for designating a parent group name for data reporting purposes.	YES
Grandparent Group Name	This is an optional setting that may be used for designating a grandparent group name for data reporting purposes.	YES

Normal Limits Setting		
Setting	Description/Options	Can Lock?
Normal Limits	Controls which normal limits calculation will be applied for the Amplitude and Conduction Velocity results of a study. Options: Use age and height adjusted normal limits (Default) Use age only adjusted normal limits Use standardized normal limits Use custom normal limits Do not use normal limits	YES

Interpretation Notes		
Setting	Description/Options	Can Lock?
Interpretation Notes	Optional. Creates a library of notes for efficient entry of study interpretation. User may create as many notes as needed.	NO

Physicians		
Setting	Description/Options	Can Lock?
Physicians	Optional. Creates a set of Physician Profiles that may be selected on the Report tab, containing the following fields: Physician (required), NPI Number (optional), Practice Name (optional), Address 1 (optional), Address 2 (optional), City, State, Zip (Optional). If a default is selected, this Physician will be auto-populated in the Report tab for each new study.	NO

Settings Locations

Reporter stores settings in the following files and locations shown below. For a Remote installation, if your organization wishes to use non-default values for any setting, the file containing that setting must be pushed to the proper location on the endpoint (if file not present, Reporter will use defaults). Use of the Interpretation Note Library, Physician List, and Technician List are optional.

File and Location	Settings Contained
SLReporterStng.xml in C:\DPNCheck	Completed Studies Measure (US or Metric) Show (Severity scale, Interpretation Guide, neither) Date Format Time Format Enable Practice Entry Include Technician Name in PDF Report Private Folder* Share Folder* Share Reports Share Exports Temperature Compensation Export Destination Automatic Export Lock Local User Upload to Cloud Customer ID* Site Name* Parent Group Name* Grandparent Group Name*
LowerLimitsNormal.xml in Private Folder	Normal Limits

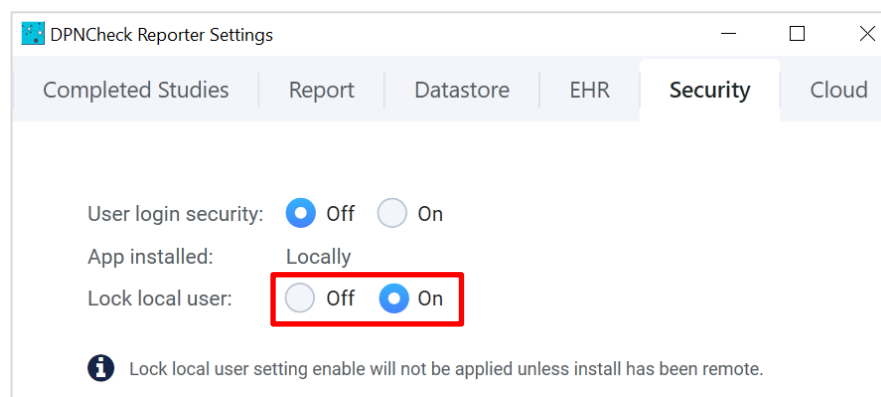
	Settings Contained
NMXSecure.config in C:\Users\[USER]\AppData\Local\NeuroMetrix,_Inc	User Login Security <i>Note:</i> For a Remote Install, to set this setting to non-default value (i.e., enabled), copy the NMXSecure.config file into the respective C:\users folder shown on the left. For User Login Security to be the non-default value, the following key must be set in the config file: “IsUserSecurityOn”...<value>True</value>
DPNCheckReporterNotes.xml in Private Folder	Interpretation Note Library*
phyprofiles.xml in Private Folder	Physicians List* <i>Note:</i> List must be created from within Reporter; Reporter assigns a unique ID in the phyprofiles.xml file to each profile (for internal Reporter use only, IDs should not be modified).
technicians.xml in Private Folder	Technicians List* <i>Note:</i> List must be created from within Reporter; Reporter assigns a unique ID in the technicians.xml file to each profile (for internal Reporter use only, IDs should not be modified).

*Depending on how your organization decides to use these settings, they may differ among endpoint Reporter instances (for example, your organization may wish to have different Physician lists accessible from different PCs). This needs to be considered when setting up Remote Installation.

Settings Lock

A selection of the Reporter settings (see [Settings Summary](#) section) may be locked from end user editing when installing remotely. When using the lock feature, settings are locked as a group; they may not be locked individually.

In the Remote Install process, a master copy is installed locally on a PC and settings configured as needed. To enable the lock feature, when configuring settings of the master copy of Reporter, first configure all other settings as needed by the organization. The lock setting should be configured last by setting “Lock local user” to “On” in the Security settings.



Once this change is made and Reporter closes, the settings file `SLReporterStng.xml` (`C:\DPNCheck`) has now been updated to lock the settings. However, **do not restart the Reporter Application**. If you restart the master copy application *after* saving this particular setting, it will revert to “Off” and you will need to repeat the process.

Before including the settings file `SLReporterStng.xml` (`C:\DPNCheck`) in your Remote Install files for distribution, verify that the “locklocaluser” key within the file has been properly set to “yes”. If not, open the Master Copy of Reporter, navigate to Security settings, set “Lock local user” to “On”, save setting and close Reporter.

Once a Remote Install is performed and the settings file contains the lock setting set to “yes”, Reporter will detect that the install has been performed remotely and the lock setting will persist for all remotely installed endpoints.