

6 PC System and Installation Requirements

The Reporter Software is compatible for installation and use on Windows PCs with Operating System versions 10 or greater.

A minimum .NET version of 4.6 is required for the Reporter application. If the PC does not have this minimum version, .NET will be updated as part of the installation process.

For optimal application display and readability, display settings should be set to the recommended resolution for the PC.

7 Installation

7.1 Important Notes Prior to Installation

General Notes

- Installation and application settings configuration require a coordinated planning effort between the end users and the IT implementation and support team. NeuroMetrix Recommends that all Reporter Software settings be reviewed prior to installation, to ensure that these may be set appropriately for your organization. It is important to clarify how the settings should be set for your organization to ensure consistent use of Reporter by end users as some settings affect user data entry and display of the test results. See Section 13: Appendix C: Reporter Applications Settings Summary for a detailed list of application settings, and Section 8: Reporter Operation for details of how each setting works in use of Reporter.
- For upgrades from prior versions of Reporter or the discontinued Communicator application, it is generally not necessary to uninstall the previous version prior to upgrade. See Section 7.6: Upgrading from a Previous version of Reporter/Communicator for further detail.
- You must be logged in with Administrator privileges to properly install the software.
- Individual(s) installing the Reporter software should follow their organization's internal security policies and recommendations.

Specific notes on use of the DPNCheck Cloud functionality

The DPNCheck cloud feature sends de-identified patient data to a cloud database for aggregated review. It operates independently from the primary operation of creating reports and exported nerve conduction data for individual patients.

- You will need a NeuroMetrix assigned Customer ID in order to enable the cloud feature. Customer IDs may be requested from the DPNCheck Cloud Administrator (see contact information Section 3: Customer Support Contact). See Section 8.12: Cloud Data Aggregation for information on this feature.
- An active internet connection is required for use of this feature.

7.2 Install Package

The install package for Reporter version 2.3 is located on the DPNCheck website, www.dpncheck.com/reporter. Separate installation packages are available for Local and Remote installation (see below).

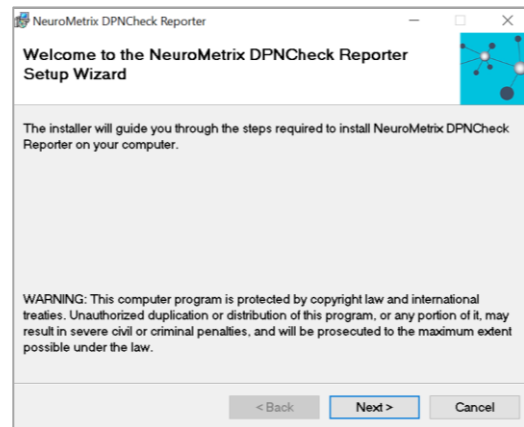
7.3 Installation Options

There are two types of installation available for the Reporter application: Local and Remote (i.e., silent). A local installation installs the application onto a single PC. The Remote installation allows your IT organization to use scripts to install a common configuration of the application to multiple endpoints without end user interaction. See details below regarding the two types of installation.

7.4 Installation Guide – Local Installation

Note: You must be logged in with Administrator privileges to properly install the software.

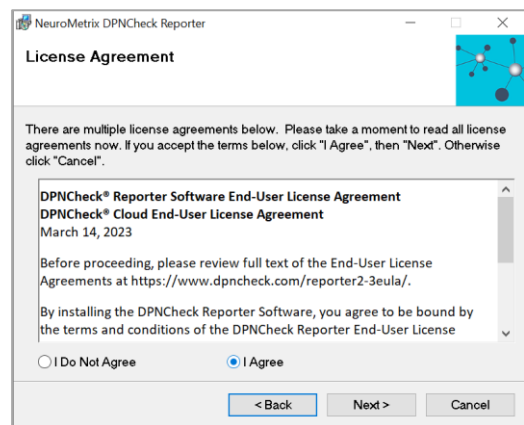
1. Double-Click **setup.exe** in the install package to initiate the install (be sure the Local Install Package was downloaded). Once the Welcome Screen appears, select **Next**.



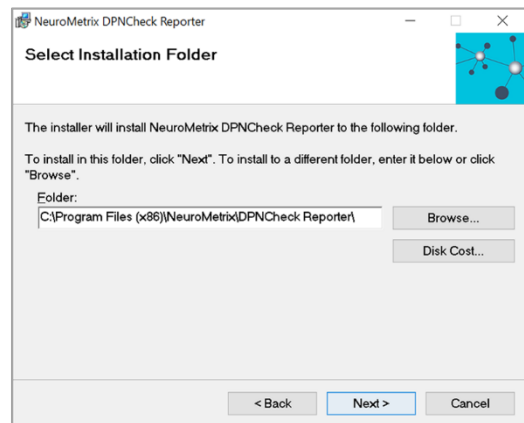
2. Review the DPNCheck Reporter Software License Agreements, select **I Agree**, and then **Next**.

There are two license agreements to review: DPNCheck Reporter End User License, and DPNCheck Cloud End User License (only applicable if you will be using the cloud functionality, see Section 8.12:Cloud Data Aggregation).

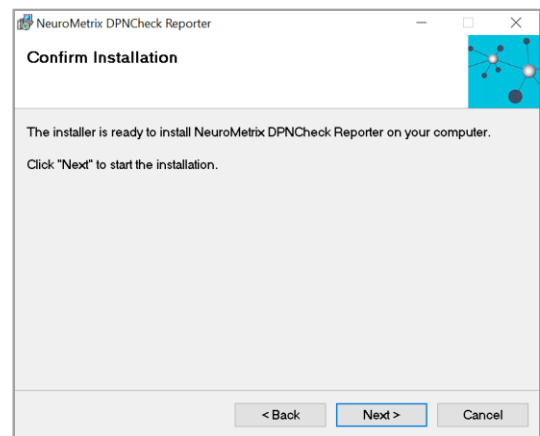
See www.dpncheck.com/reporter2-3eula/ for full text of the agreements. You must agree to the terms of the agreement(s) before proceeding.



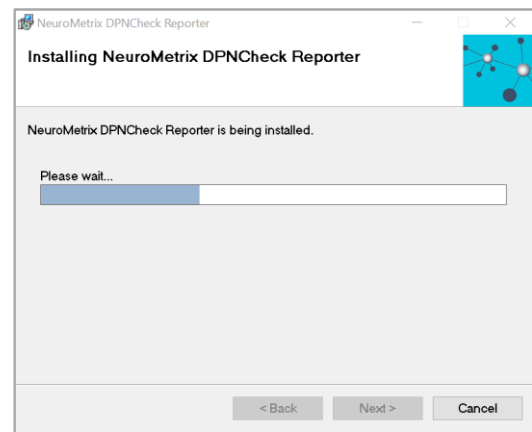
3. Select the Installation Folder. The default creates a folder on the C drive shown here. Select **Next**. To change the folder location, select **Browse** to select the preferred location. The software will now be ready to install on your computer. Select **Next**.



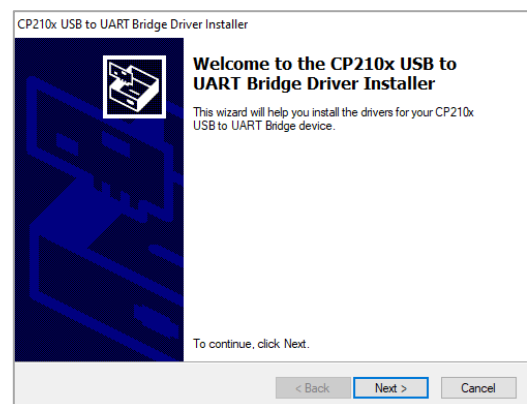
4. Select **Next** to confirm installation.



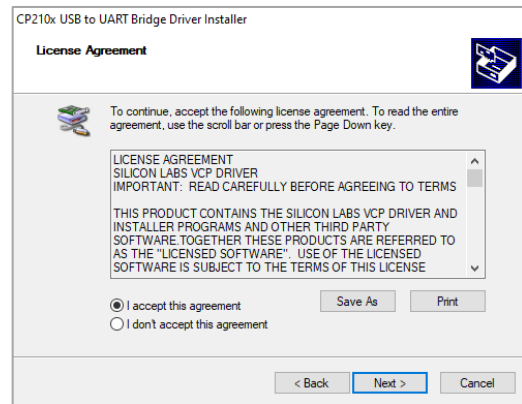
5. A progress screen will appear to update the status of the installation.



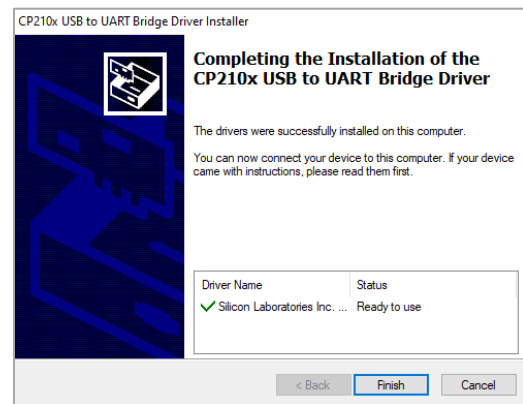
6. The Driver Install screen will appear. Select **Next**.



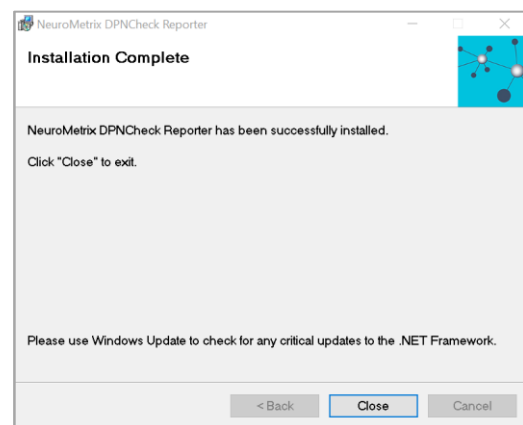
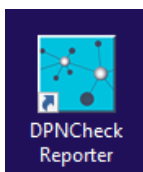
7. Review the License Agreement, select **I accept this agreement** then **Next**.



8. Select **Finish**.



9. The Installation Complete screen will appear when done. Select **Close**. This shortcut icon will appear on the PC desktop:



DPNCheck Reporter is now ready to use. Double click the application icon to launch the application.